

This is a **preview email**. Here's a note from the person who sent it:

*"Final test of Destination Architect before sending."*



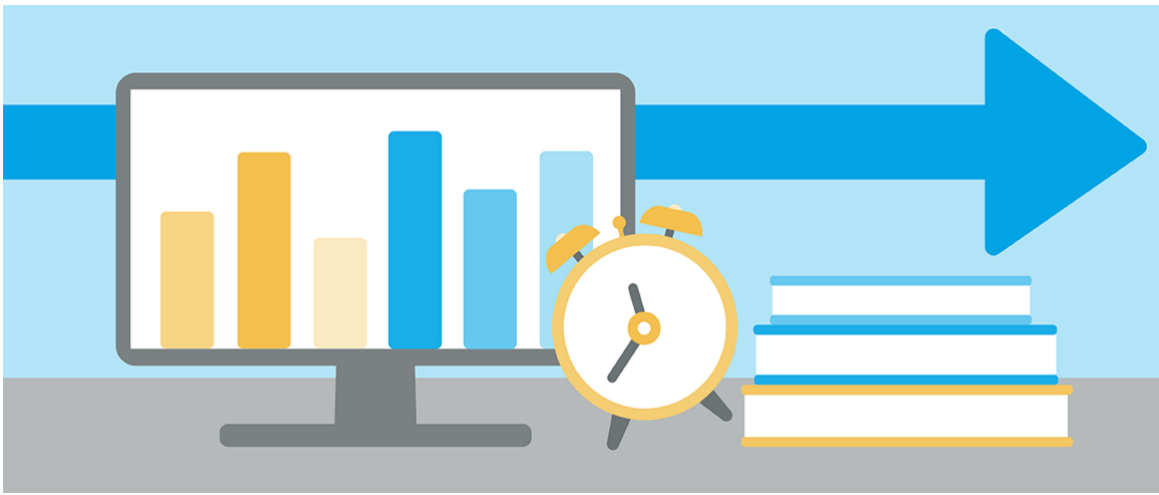
March 2022



## [7 Need-to-Know Tips About the PSI Migration](#)

Whether you're taking the exam or getting ready to test, these are the key takeaways you need to know as NCARB switches exam delivery vendors this summer.

# ON THE BLOG



## [How to Gain Experience Under AXP Setting O](#)

Completing your experience requirement? Learn how to take advantage of experience opportunities outside of working under the supervision of a U.S. licensed architect.

## [Explore NCARB's New Website!](#)

We recently updated our website's look and feel. Learn more about what we changed and review how to use our Licensing Requirements Tool.

## [Status Update: NCARB Culture, DEI, and Governance](#)

Read an update from NCARB President Alfred Vidaurri, NCARB, NOMA, FAIA, on how we're working to foster diversity, equity, and inclusion in our organization.

# ARE 5.0 NEWS



## [ARE Update: PSI Launch Date + Updated ARE Guidelines](#)

NCARB will switch to our new exam delivery vendor, PSI, this summer. The last day to test with Prometric is May 31, 2022, and the first day to test with PSI is June 14, 2022.

## [Watch Our Webinar: ARE and PSI](#)

Our experts answered candidate FAQs about the migration to PSI during our latest webinar—watch the recording now.

### National Council of Architectural Registration Boards

1401 H Street NW Suite 500  
Washington, DC 20005



#### Share this email:



[Manage](#) your preferences | [Opt out](#) using **TrueRemove®**

Got this as a forward? [Sign up](#) to receive our future emails.

View this email [online](#).

1401 H Street NW Suite 500  
Washington, DC | 20005 United States

This email was sent to cbear@ncarb.org.

*To continue receiving our emails, add us to your address book.*

**emma**<sup>®</sup>